

EXTRA CURRICULAR



FOR IMMEDIATE RELEASE 17/06/2020

4 JULY -22 AUGUST 2020 | OPENING NIGHT FRIDAY 3 JULY 6:30PM – 8PM

Celebrating the work of visual arts teachers from Perth's eastern region; *Extra Curricular* sheds light on the creative impulses that drive high school art educators. On display at Midland Junction Arts Centre 4 July – 22 August, the first iteration of the biennial exhibition presents work by Adam Derums, Claire Eden, John Eden, Franci Hepburn and Vivienne O'Neill.

All of these teachers maintain active independent practices, and present a selection of their work to spark a discussion about the role of creative skills in schools and our community. From digital design and oil painting to meticulous mark making and en plein air drawing, *Extra Curricular* celebrates the persistence of creating work beyond the classroom.

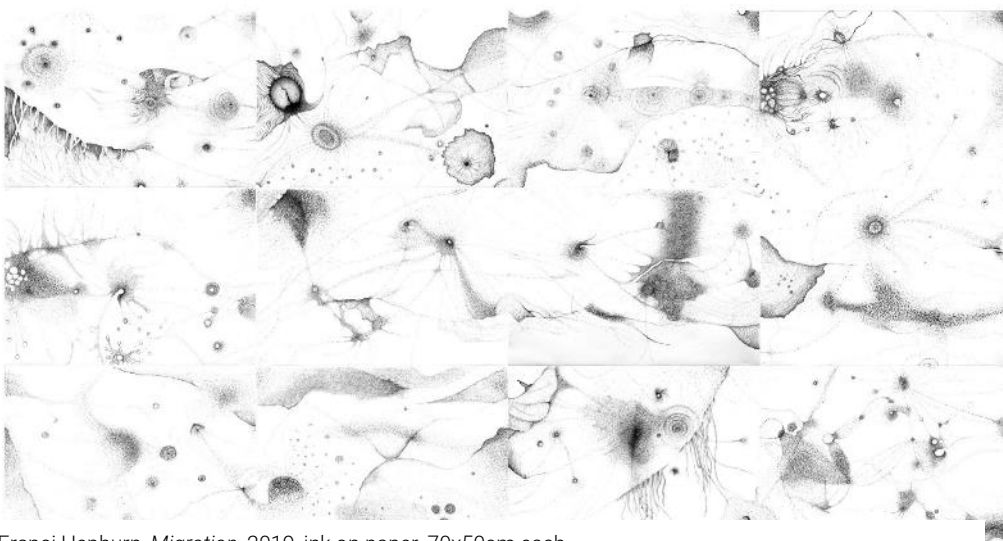
Claire Eden is fascinated by patterns and textiles, turning her watercolour and gouache artworks into digital designs printed on natural fibres for her slow fashion brand 'Dreamy+Eden'. Eden does this whilst sharing her passion with students of Visual Arts and Design at Kalamunda Senior High School, "As an educator I attempt to spark a love of creativity and learning in my students".

Also teaching art at Kalamunda Senior High School, John Eden finds time for his practice during walks and bicycle rides, ensuring he carries drawing and watercolour materials to document his exploration of new places. After completing small initial studies, Eden might return many times to develop his larger, more detailed works or to experience the area under different light.



John Eden painting en plein air during a bike ride.

Adam Derums instead finds his creative energy in the early hours of the morning before going to work at Guildford Grammar School. Over many months he gently drips paint onto canvas, carefully guiding it using compressed air, as it runs across the face of the painting. This slow and meticulous production results in flower like forms that embody the energy of the movement used to create them.



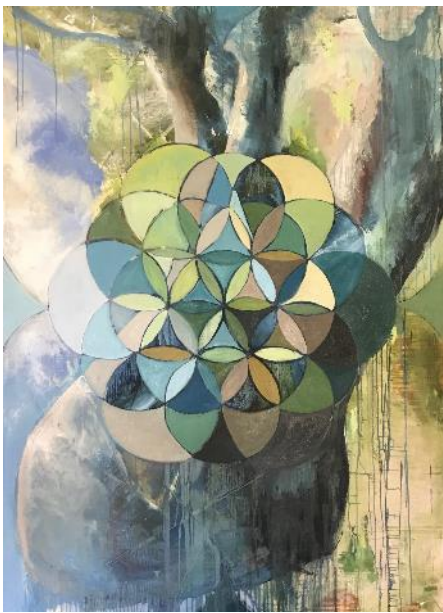
Franci Hepburn, *Migration*, 2019, ink on paper, 70x50cm each.

Head Teacher in the Arts at Parkerville Christian College, Franci Hepburn fuses aesthetics with the social, historical, political, geographical and cultural cross-pollination of a globalised world. The South African born artist's work *Migration* explores movement beyond borders and the experience of new landscapes through a series of large ink on paper panels.

Vivienne O'Neill's expressive paintings use her direct experiences and memories to respond to the area of Yagan Bridge and related sites between Guildford and Walyunga National Park, where the Swan River becomes the Avon River. O'Neill is currently completing her Phd in Fine Art at Curtin University whilst also teaching full time at Youth Futures Community School in Midland.

To highlight the process of these educators work, *Extra Curricular* will present a selection of artist journals, books, studies and custom made tools alongside more resolved works, offering a glimpse into the artist's methods.

Whilst Visual Art Educators are required to develop comprehensive skills in all areas of visual art and support the creativity of others, *Extra Curricular* provides a moment of spotlight for those involved, allowing a showcase of their own work and creativity.



L-R: Vivienne O'Neill, *Blueprint*, 2019, oil on linen, 140 x 100cm; Adam Derums, *A Night of Sighs, A Morning of Fresh Tears*, 2018, oil on canvas, 230 x 168 cm; Claire Eden, *Protea (detail)*, 2017-2020, digital print on fabric.

Also on display at Midland Junction Arts Centre:

Palestinian Threads and Stitches has been extended until 22 August. This exhibition celebrates the living diversity of Palestinian identity within the Western Australian community with handmade, traditional tatreez embroidery pieces. The project is a partnership with CAN and twelve local Palestinian women, whose individual tatreez have been stitched together into a single cloth, just as the stories of the women who made them are stitched together with the common threads of identity and culture.

For media enquiries contact Jess Boyce, Communications Officer
info@midlandjunctionartscentre.com.au | 0410 412 254

Midland Junction Arts Centre

MANAGED BY MUNDARING ARTS CENTRE INC | SUPPORTED BY CITY OF SWAN

276 Great Eastern Hwy, Midland WA 6056 | 08 9250 8062 | midlandjunctionartscentre.com.au

Wed – Fri 10am – 5pm, Sat 11am – 3pm

